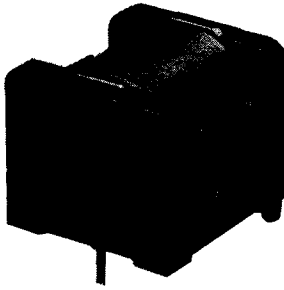
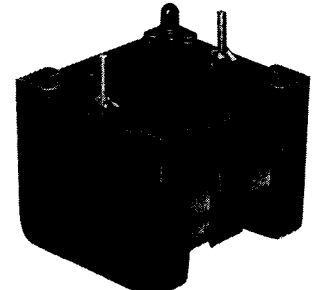
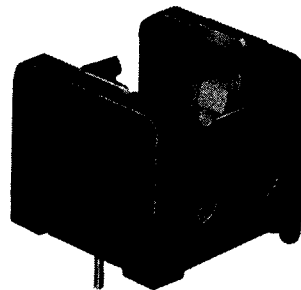


LOW PROFILE SERIES



BH 1/3N



FEATURES

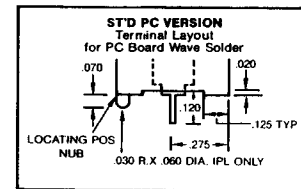
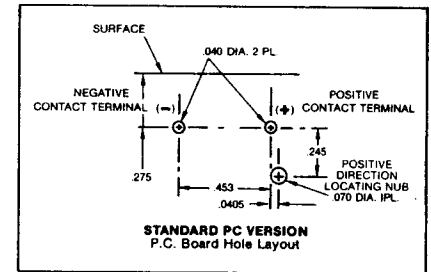
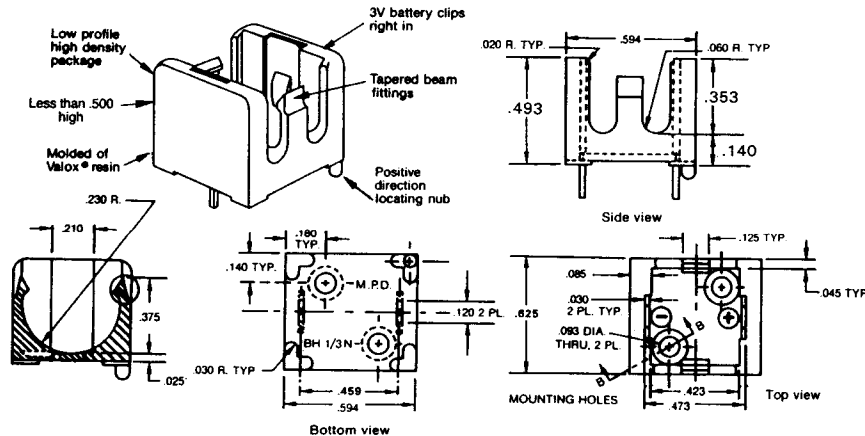
- Fits all 3-volt lithium cylinder cells standard style 1/3N.
- Printed circuit board mounting.
- Unique molded design offers easy insertion & removal of battery without desoldering or special tools.
- Special design molded base assures proper polarity of inserted battery.
- Raised mounting tabs permit free air flow around battery & insulation from extreme solder bath temperatures.
- Low profile (less than 1/2") permits PC board stacking.
- Unique tapered beam fitting design assures battery to be held in place.
- High temperature resistant U. L. 94V-O VALOX® Material.

APPLICATIONS

- CMOS, Microprocessors & Microcomputer hold-memory.
- LSI type Microcomputers, P.O.S., Preprogrammed Products
- Software memory transfer and hold.
- Electronic switchboards, telephones.
- Microwave object identification and control systems.
- Emergency Rescue beacon transmitter and marine equipmer
- Power source for real time clocks in computerized equipmer
- Industrial controls.
- Electronic communications devices.
- Telecommunication equipment.

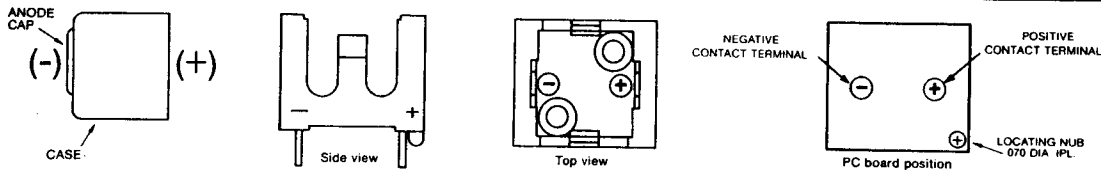
SPECIFICATIONS

Material:		Dielectric strength	560 volts/mil at 25°C for 5 sec.
Holder	Self-extinguishing thermoplastic Polyester, VALOX® 420 SEO	Color	Black
Contacts	302 spring temper stainless steel, nickel plated	Temperature range	-55°C to +140°C.
Flammability rating	U.L. 94V-O	Resistance to solvents	Xylene; ethyl, butyl, methyl & propyl alcohol; ethyl acetate; refrigerants; heptane; toluene.
		Weight—BH-1/3N	2 grams



PROPER POLARITY INSERTION OF BATTERY

U.S. Patent No. 4,495,257



A special molded locating Nub on holder is designed so installation on PC board can be done in only one positive direction.

BATTERY APPLICATION CHART: MPD MODEL BH-1/3N FITS THE FOLLOWING MANUFACTURERS' LITHIUM CYLINDER CELLS

CELLER SIZE	CELL TYPE	CELL PART NO.	PACKAGE	UNITS CARTRIDGE
1/3N	CR-1/3N	3B1230	DL-1/3N	2L76